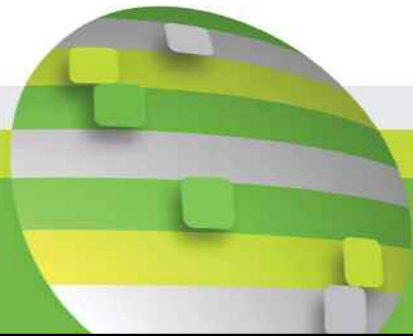
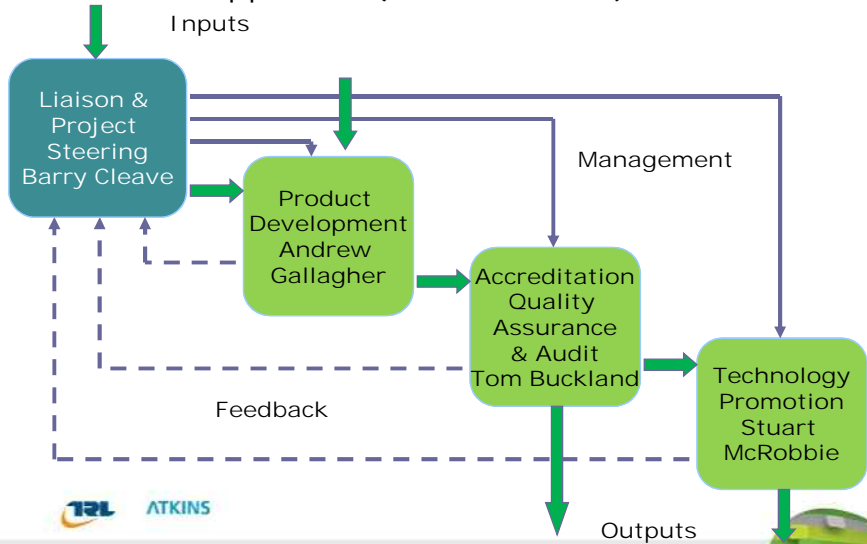


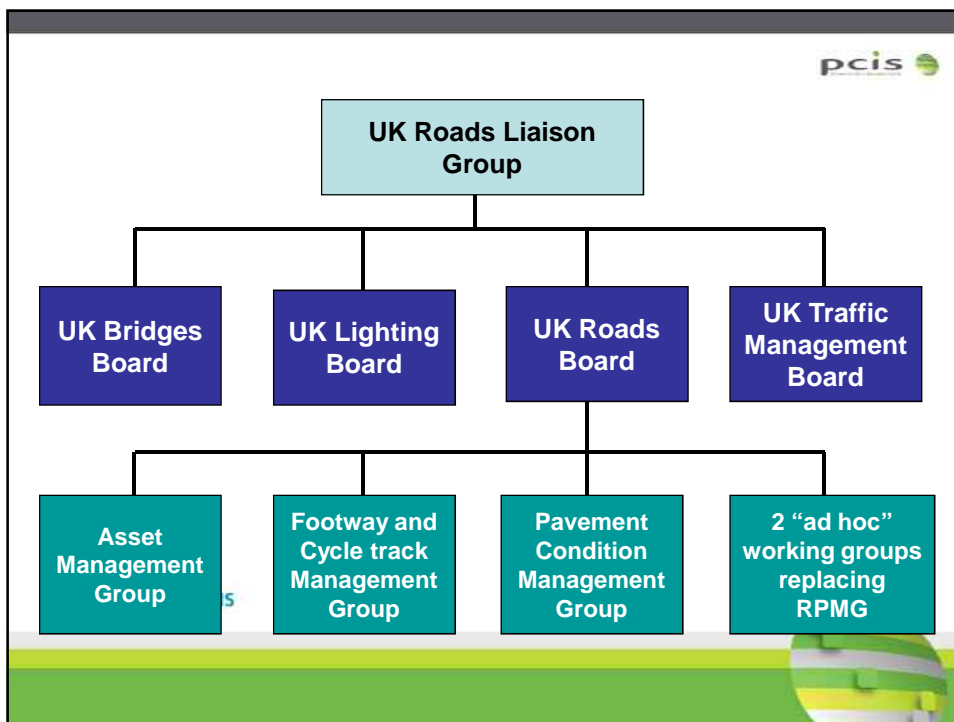
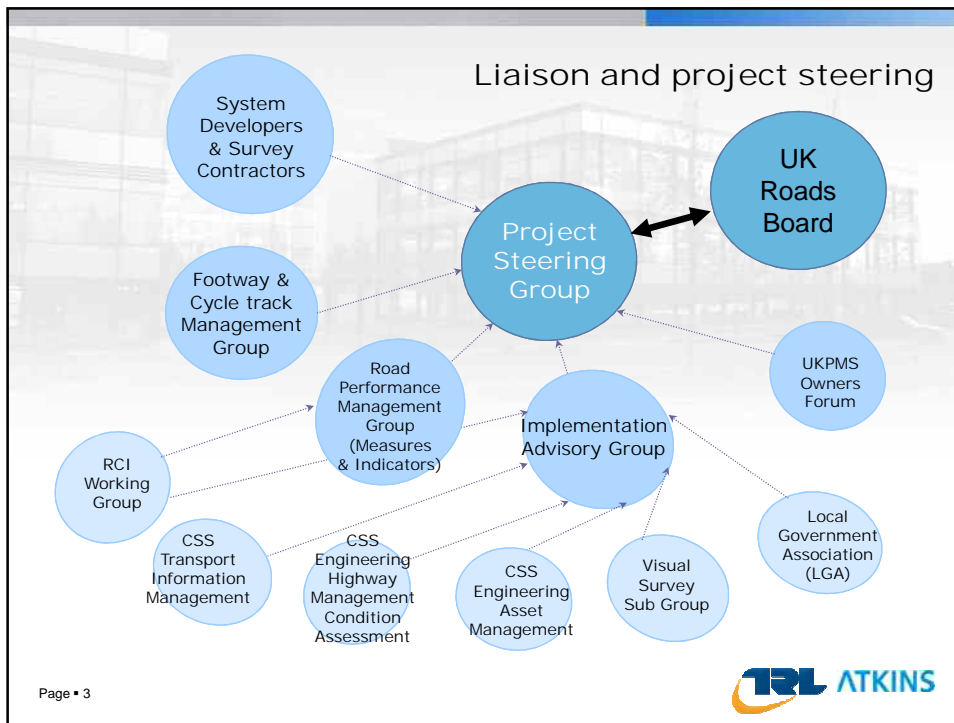
# Pavement Condition Information Systems

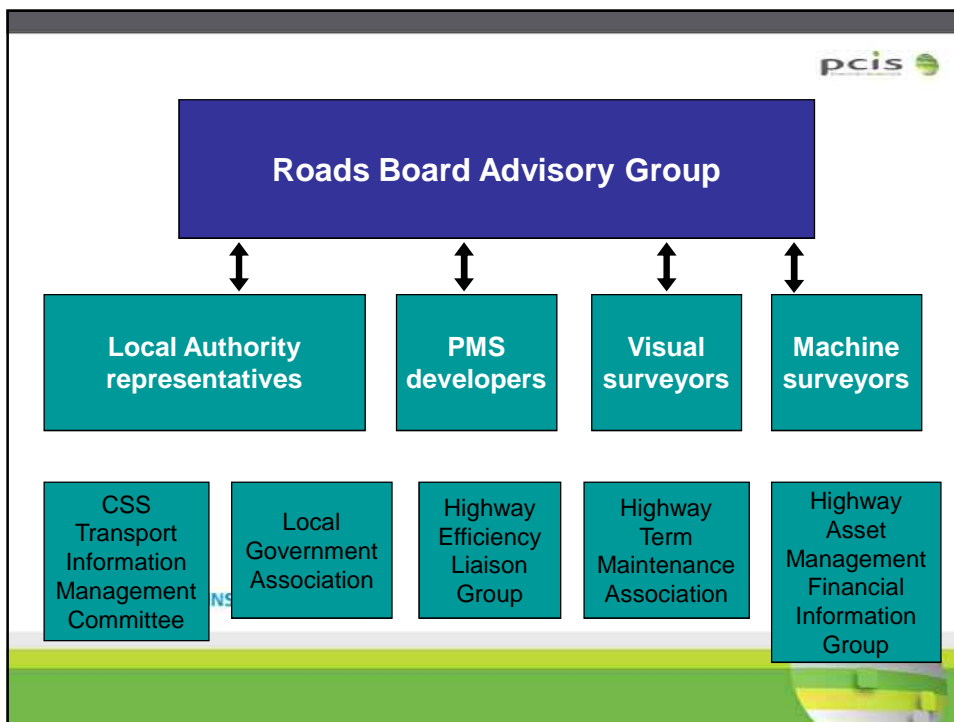
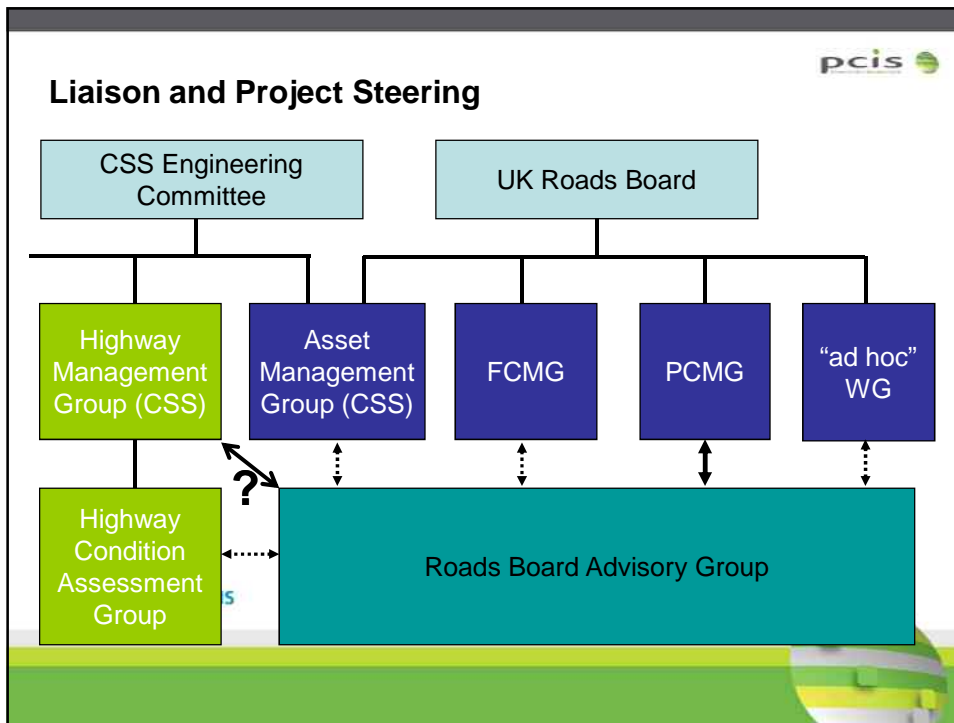
Liaison and project steering  
Barry Cleave  
PCMG 12<sup>th</sup> February 2009

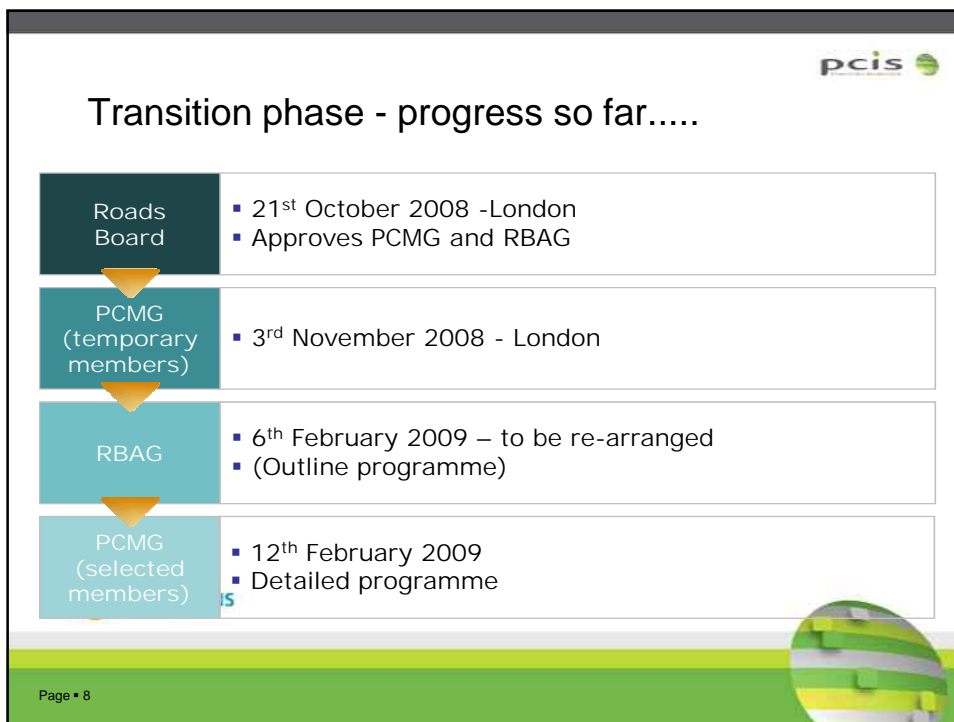
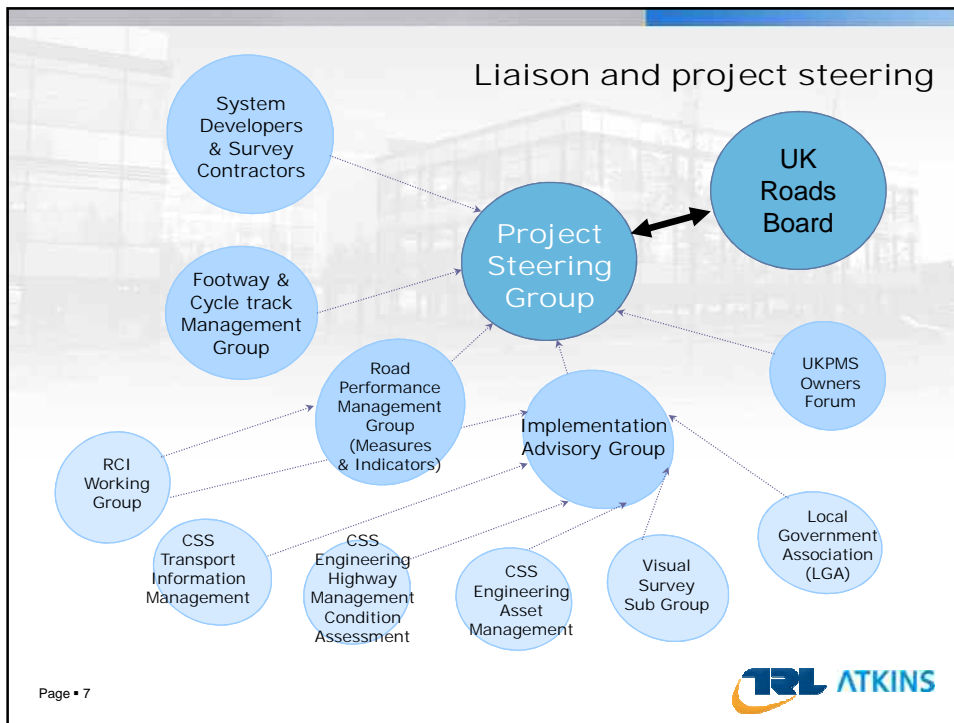


## Our overall approach (work streams)









## Evolution phase - progress so far.....



## Issues for discussion

- RBAG local authority representatives
  - North West (2 needed)
  - South East (2 needed)
  - Yorkshire (1 needed)
  - North East (1 needed)
  - Scotland (?)
  - Wales (?)
  - Northern Ireland (name)

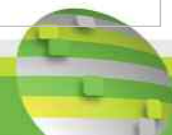
## Issues for discussion

- RBAG industry representatives
  - Should we limit companies to one representative for UKPMS and one for SCANNER?
- Do we accept HTMA nominees?
  - Representatives
    - Dennis Parkinson (Ringway),
    - Eric Brangier (Colas/ Ensign)
  - Substitutes
    - Graeme Jones (Mouchel)
    - Mat Thomas (Amey)



## Evolution phase – more to do .....

DfT	<ul style="list-style-type: none"> <li>▪ Two working groups (Tony Boucher)</li> <li>▪ Strategy for unclassified roads</li> <li>▪ NRMCS from SCANNER data</li> </ul>
CSS	<ul style="list-style-type: none"> <li>▪ Asset Management Group (Paul Boss)</li> <li>▪ Highway Management Group (Chris Capps)</li> <li>▪ Transport Information Management Group</li> </ul>
LGA	<ul style="list-style-type: none"> <li>▪ Local Government Association</li> </ul>
NHT	<ul style="list-style-type: none"> <li>▪ National Highways and Transportation survey</li> </ul>



# Do You Have Any Questions?



## Thank you Liaison and project steering

Presented by Barry Cleave  
Pavement Condition Management Group  
12<sup>th</sup> February 2009  
Tel: 01344 770164  
Email: [bcleave@trl.co.uk](mailto:bcleave@trl.co.uk)

