

UK Roads Board Asset Management Sub-Group Quickstart Guidance

Paul Boss

Roads Board Advisory Group

9th July 2009



Staffordshire
County Council

Who are we?

Used to be known as CSS/TAG

CSS Engineering Committee sub-group joint working with TAG members

Highway Management Group

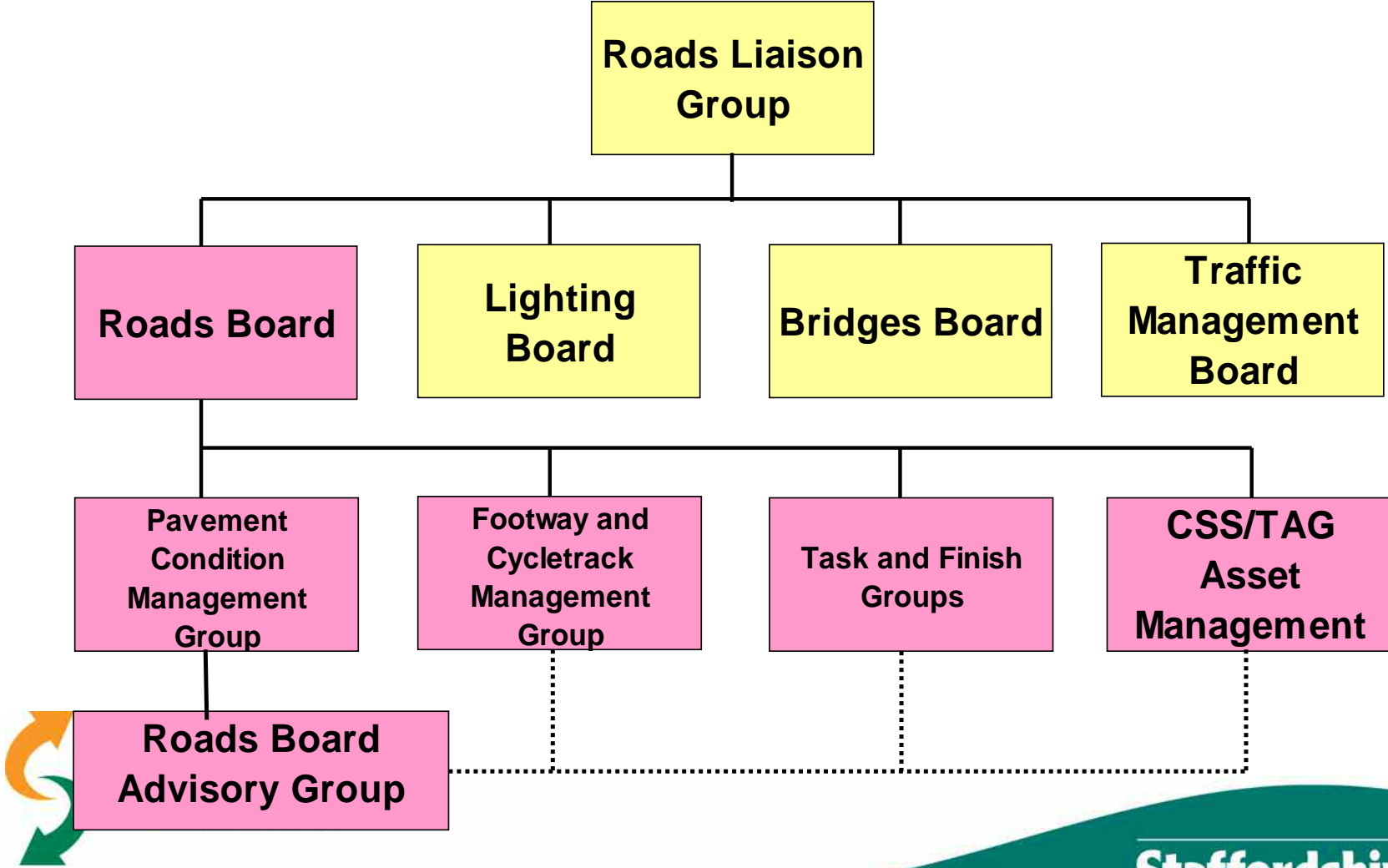
Asset Management Working Group

A Sub Group of UK Roads Board



Staffordshire
County Council

Roads Liaison Group



Quickstart Guidance Notes

Agreed as part of the sub-groups business plan to produce 5 guidance note documents and publish electronically in 2008/09.

Getting Started
Software specification
Levels of Service
Lifecycle Planning
Risk Assessment



Staffordshire
County Council

Timetable

April 2008 – Establish groups and lead authors

July 2008 – Drafts for consideration by the sub-group

October 2008 – Sign off by the group

December 2008 – Critique and publish

Published – June 2009!



Staffordshire
County Council

Getting Started

Sets out a practical means of getting started with asset management, and identifying the sensible steps that should be taken to progress this practice, and in what order you should address these

Initial document for authorities who are yet to get going

HAMFIG workshops and consultation to date has shown many, particularly small authorities are still not engaging in the process



Getting Started – Content

- Getting Started with Asset Management
- What is Asset Management
- Getting Started Checklist
- Getting Buy-in and Support for Asset Management
- Putting the Asset Management Foundations in Place
- Conclusions
- References



Levels of Service

This has been produced in order to assist local highway authorities, in defining and implementing Levels of Service for their networks.

Contents

- Introduction
- Background
- What are Levels of Service – Some Definitions
- What form should they take
- Customers, Stakeholders and Authority Objectives
- Relationship between LoS and Authority Objectives



Staffordshire
County Council

Levels of Service – Contents (2)

- Level of Service and Engineering Standards
- Suggested Approach
- Where does this lead us?
- Comments on Highway Authority Work
- References
- Customer Types and their Requirements
- Code of Practice Themes
- Examples of Highway Authority Work



Lifecycle Planning

Forms a key part of an Authority's Highways Asset Management Plan (HAMP). Effective lifecycle planning requires several fundamental asset management activities to have been carried out and considerable asset knowledge to have been established. Without this knowledge, lifecycle plans will not target the effective maintenance and renewal of assets, leading to either premature maintenance or deterioration and possible safety risks to highway users.



Lifecycle Planning - Content

- Introduction
- The Lifecycle Process
- Objectives and Policies
- Inventory and Condition Data
- Cost of Maintaining Each Group of Assets
- Performance Gaps
- Demands and Risks
- Investment Strategy
- Example Plans



Risk Assessment

Intended to assist those authorities who have not yet commenced this central aspect of asset management planning but who are familiar with the principles of managing risk and may have applied risk management techniques to other parts of their business.



Staffordshire
County Council

Risk Assessment - Content

- Scope
- Introduction
- Existing Guidance
- Simple Steps to Getting Started
- References
- Definitions
- Examples from Risk Registers
- Background Information



Software Specification

Overtaken by the work of HAMFIG

Locked Excel spreadsheets will be made available as part of the HAMFIG draft consultation on the Code of Guidance

Inclusion in UKPMS 2009 AHC

Released by developers towards the end of 09/10

Further update releases in the following years



Staffordshire
County Council

Where are the Guidance notes

Uk Roads Liaison Group website

Asset Management and Valuation

http://www.ukroadsliaisongroup.org/liaison/asset_management.htm



Staffordshire
County Council