

The Footway & Cycle Track Management Group

Kevin Fuller
Area Director – Highways and Transport
West



Outline

Introduction

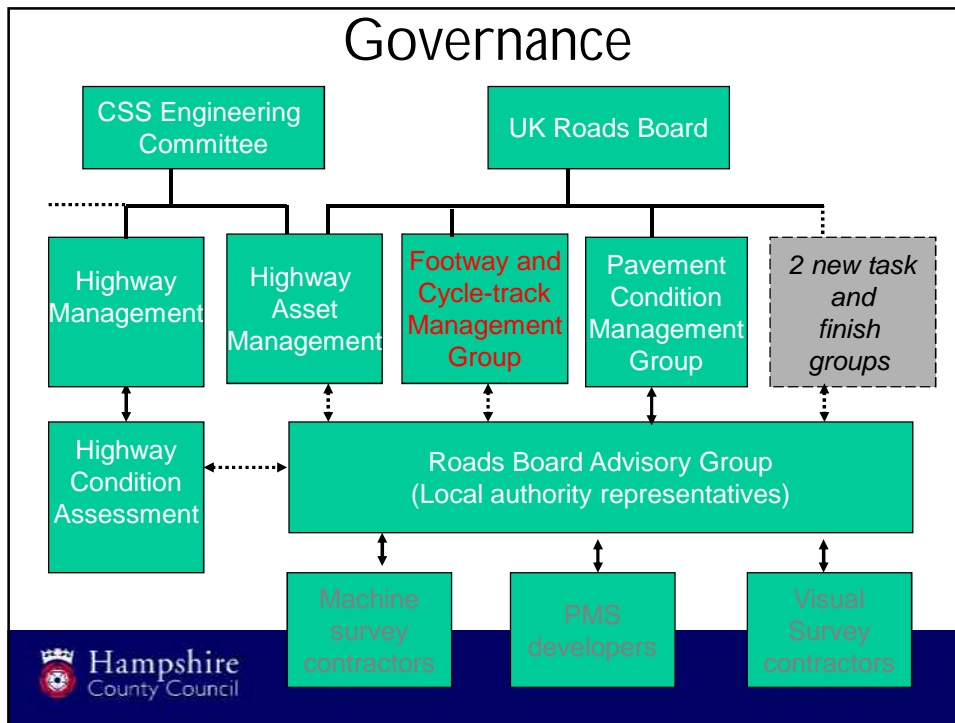
FCMG- www.footways.org

Past Research and publications.

Current projects

Business Plan and future projects





Past research and publications

- **Application Guide AG26**
 - Footway and cycle route design, construction and maintenance guide. 2003
 - Updated to give advice on cycle tracks
- **Condition indicators in footway maintenance**
 - TRL Report 534. 2002
- **Footway maintenance management**
 - TRL Report TRL535. 2002
- **Footway risk analysis model**
 - PPR 171
- **Footway and cycle track Asset Management**
Asset Valuation and whole life costing – guidance document

The image shows three overlapping document covers. The top one is blue and titled 'ROADS'. The middle one is white with a blue header and titled 'Footway Maintenance Management'. The bottom one is white with a blue header and titled 'Footway Risk Analysis Model'. The Hampshire County Council logo is in the bottom left corner.

Current Projects

- **Information Strategy**
- Phase 1 – the development of a network wide footway condition survey and condition indicator.
- Strong driver – Asset valuation

Footway Condition Survey

- Pilot stage complete- draft report out for consultation – sense test – advisory group.
- Required sign up approval from Roads Board April 2009
- Guidance – Specification – UKPMS link
- Target role out launch end 2009

Table 1: Four levels of service (categories) for the new coarse network survey

Level of service/category	Examples
1. As new	Brand new footway Recently reconstructed
2. Aesthetically impaired	Sound footways with patching Modular footways with sound bituminous patches Modular footways with elements of different colour/age/material Faded bituminous material (especially coloured bituminous)
3. Functionally impaired (minor defective)	Cracked but level flags/blocks Minor surface deterioration/fretting/fatting
4. Structurally unsound (major defective)	Cracked and/or uneven flags Major fretting and potholing Major cracking. Poor shape etc

Table 2: Survey/sub-survey types trialled in the feasibility study

	Mode	Details
Basic survey Coarse network survey estimated (CNSM)	Walked	Percentage of each level of service measured using a wheel (section length measured by default)
Sub-surveys Coarse network survey estimated (CNSE)	Walked	Percentage of each level of service estimated back over 100m, but overall section length measured
Coarse network survey measured - driven (CNSMDr)	Driven	Percentage of each level of service estimated. Section length measured automatically.
Coarse network survey measured and safety combined (CNSM&Saf)	Walked	The CNSM combined with a safety inspection
Coarse network survey measured with GPD (CNSM&GPS)	Walked	The CNSM using a GPS device for positioning

Business plan and future projects

- Survey Strategy - deliver condition survey – 2009
- Slipperiness of footways - 2009
- Refresh AG26 – integrate with local design manual.
- DDA – maintenance and management standards.
- Focus on Cycletrack – management
 - On road based cycle routes – maintenance management standards.
- Survey Strategy – street scene.